



# QuickTips: Glass Cutting

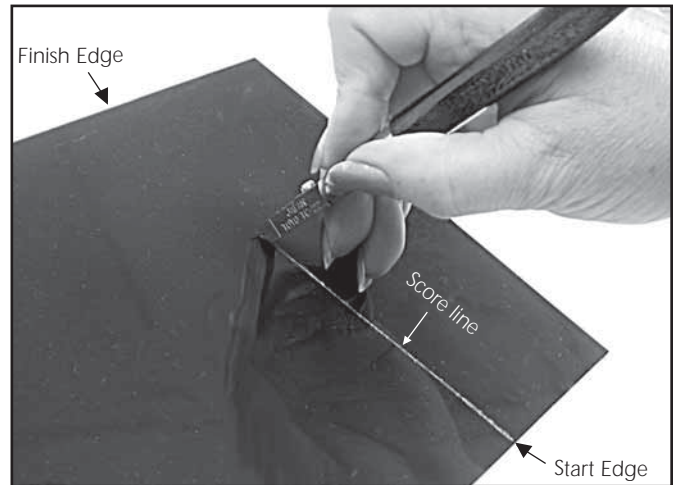


**You don't "cut" glass; you score, then break it.**

## Score the Glass

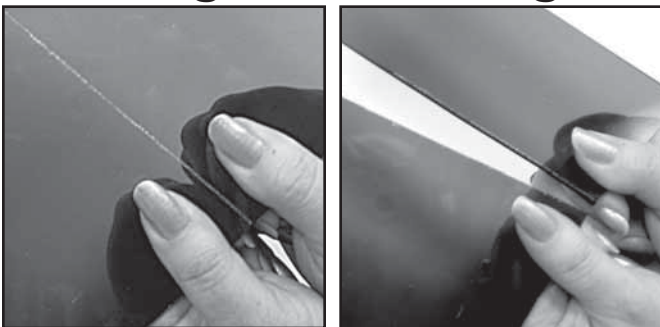
Hold cutter wheel perpendicular to glass surface. Use just enough pressure to create a gentle "hiss" sound as the cutter wheel rolls. A score must always start at one glass edge and end at another glass edge.

## Score the Glass

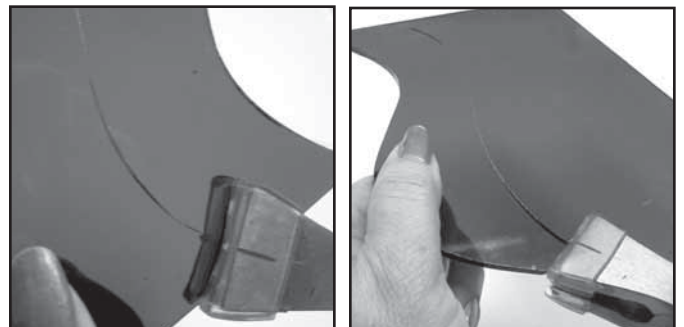


Always score glass from **edge to edge** using steady, even pressure.

## Breaking and Running a Score

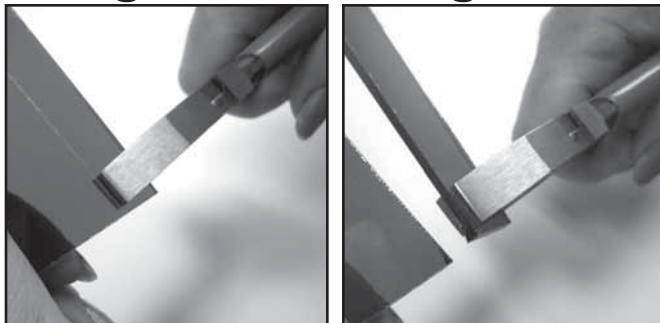


For straight cuts, straddle the score with thumbs, snap glass down and away.

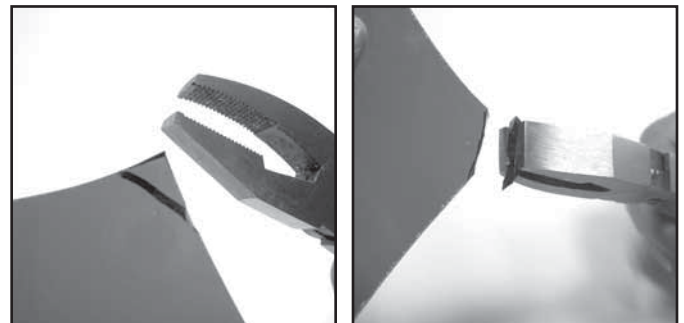


On more challenging cuts, "run" the score before breaking it. Run from both ends if needed.

## Using the Breaking Pliers



Use Breaking Pliers when pieces are too small to grasp safely. Pull down and away.

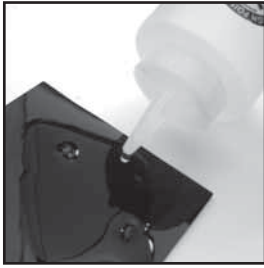


Breaking Pliers can also be used to remove unwanted bits of glass.



# QuickTips: Using Frit

**Klyr Fire** adhesive helps frit stick \_\_\_\_\_



Use drip bottle,



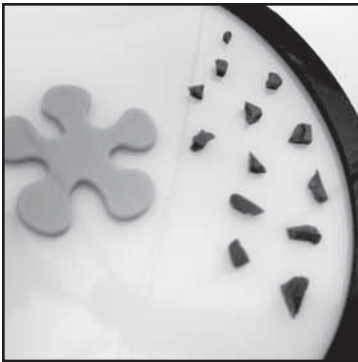
spread with swab,



or brush on.



**Draw**



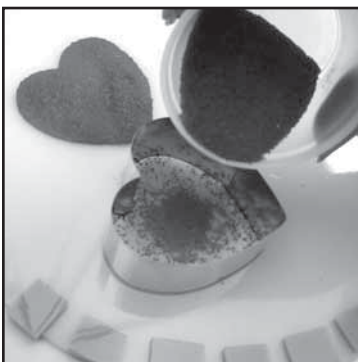
**Place**



**Sprinkle**



**Fill**



**Shape**



**Stencil**



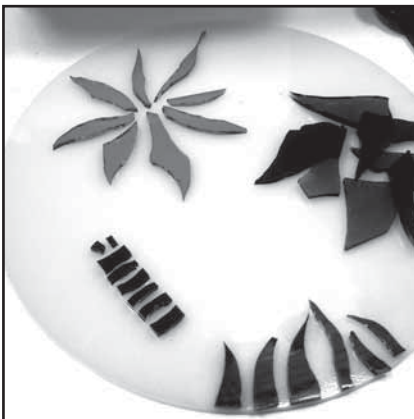
**Outline**



# QuickTips: Nippers



**ALWAYS  
NIP INTO  
A BASKET!**



## **Design**

Random "nips" make organic design elements, big or small.



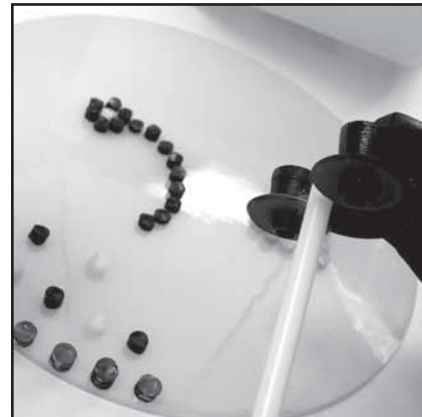
## **Triangles**

Triangles are easy to nip from a strip.



## **Shape**

Nibble little bits at a time to create a specific shape.



## **Rod Dots**

Nip short sections of Rods to make "Rod Dots."